



225GT Sticky Fox™

Professional
GLUEBOARD
FLYTRAP



The Gilbert® Sticky Fox™ out-catches competitors whether it's wall-mounted or mounted under-counter. It features stainless steel construction (guard door included), easy maintenance; and silent-capture at a low, stunless price. Now, with two glueboard trays.

Insect Attractant: Two standard Gilbert® F20T12BL350 (20 watt) lamps contain superior 350BL phosphor. Replace annually for continued performance.

Installation: Wall-mount with keyhole slots or mount under-counter with screws. Generally speaking, low positioning yields best results for any flytrap against flies.

Electrical: Six foot, 3-wire grounded power cord. Standard 115v/60hz.

Maintenance: Stainless steel guard swings up for easy access to lamps and glueboard(s) for periodic cleaning / replacement. Two glueboard trays are now standard.

Change glueboard(s) regularly, at least as often as local codes require. Change lamps annually.

Construction Features: Stainless steel (Including guard door). Thin 3-5/8" wall-hugging profile.

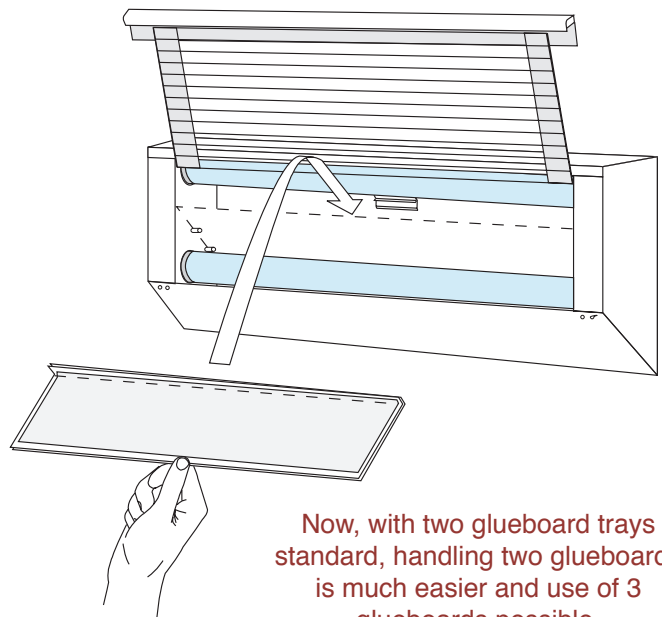
ONE YEAR WARRANTY: (Excluding lamps and glueboards).

Dimensions: 27 3/4" x 11 3/8" x 3 5/8"
Weight: 12 lbs.. **Ship Wt:** 17 lbs.



Listed 723R

225GT Will Hold Three Large Glueboards.



Trap holds large (21-7/8" x 4-7/8") or standard (16-7/8" x 4-7/8")

Remember the 5/8" bend option to help retain insects and glue.

Now, with two glueboard trays standard, handling two glueboards is much easier and use of 3 glueboards possible.

Glueboard trays slip-in on pegs between lamps or in bottom of trap.

The third (optional) glueboard may be inserted into the clip (behind top lamp).

See Also: gilbertinc.com/glueboard.htm